

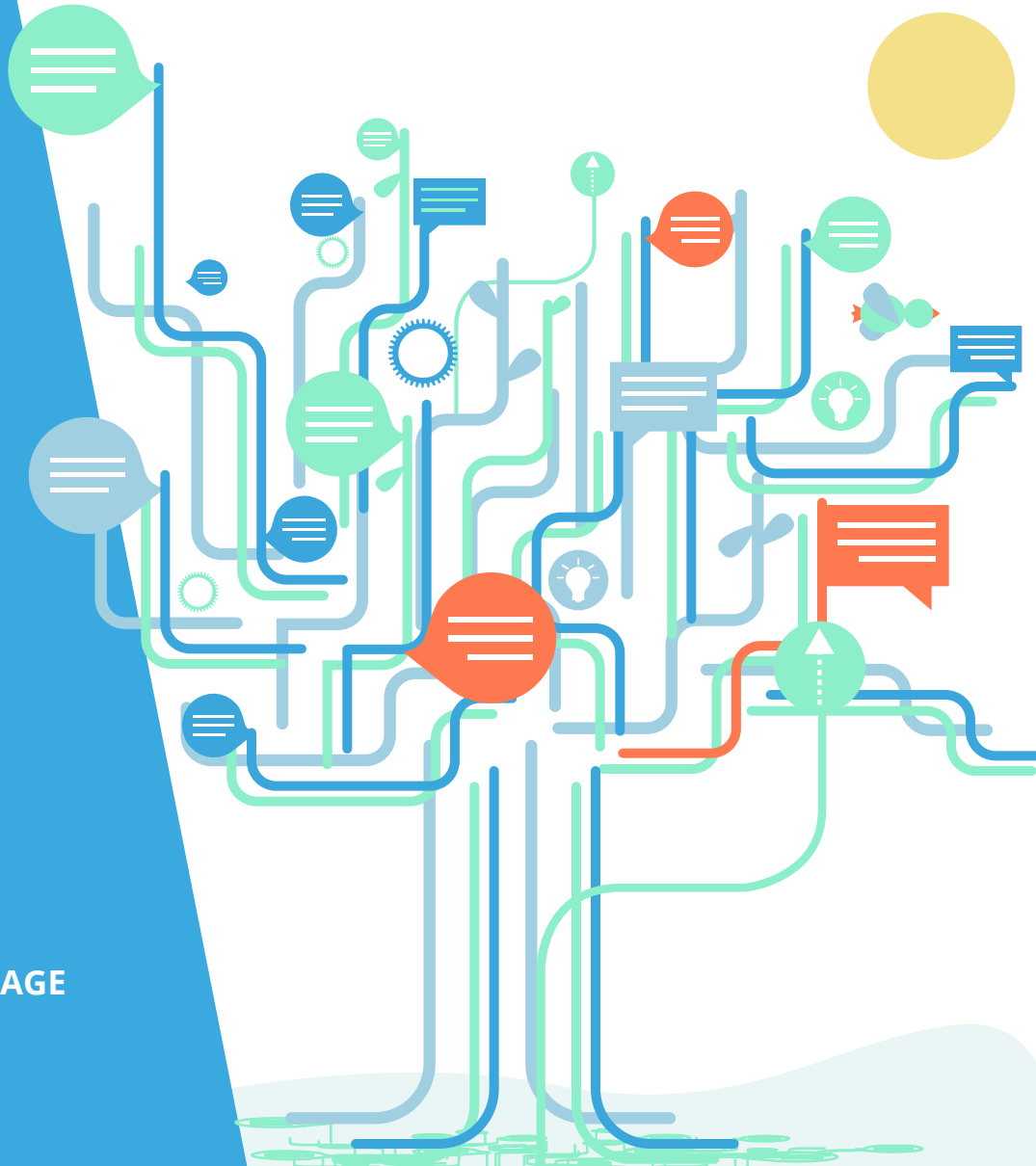
Adverbs of time

GRAMMAR

LEVEL
Beginner

NUMBER
A1_1047G_EN

LANGUAGE
English

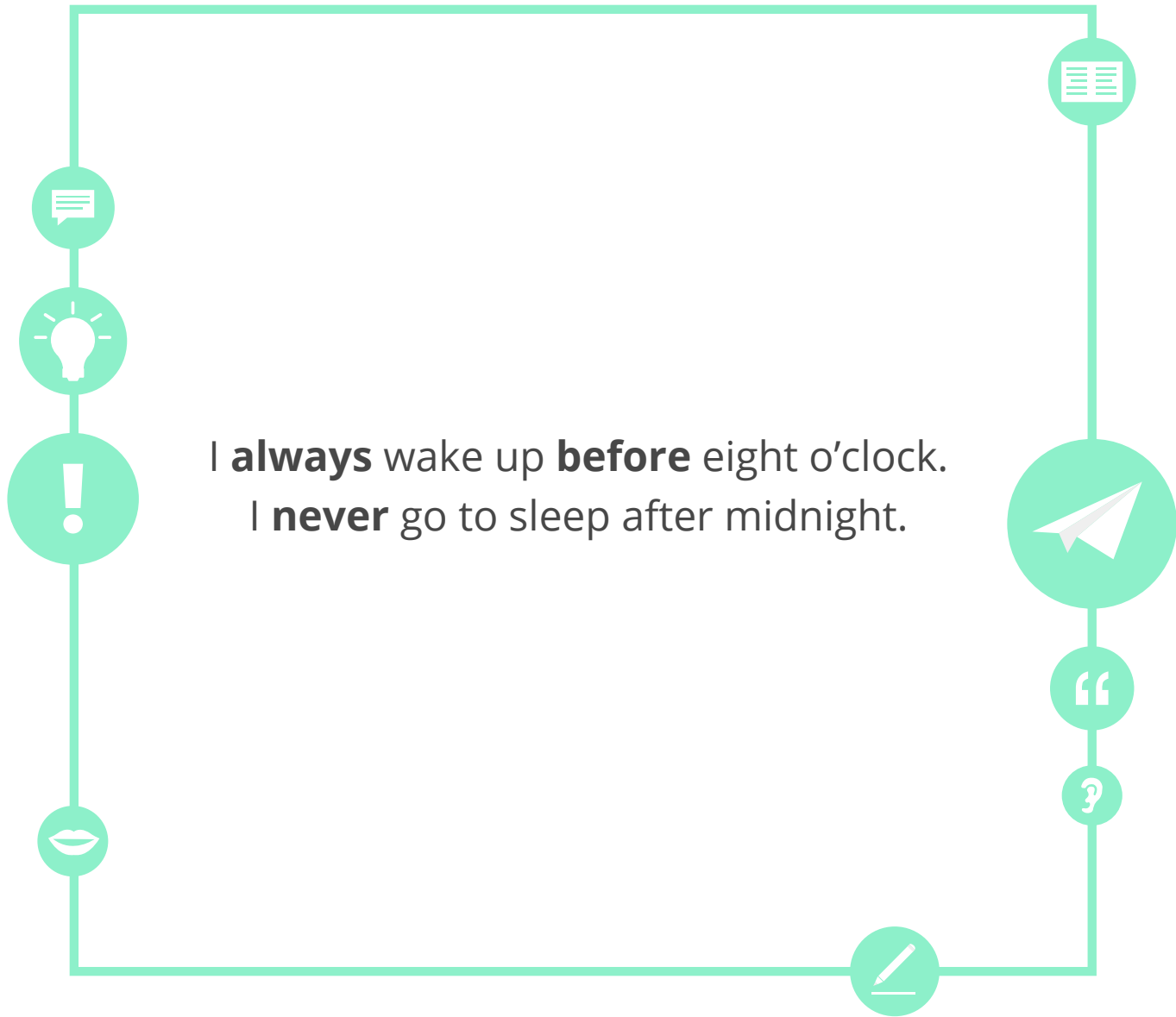




Goals

- Can place adverbs of time in the correct position in a simple sentence.
- Can identify the meaning of some common adverbs of time.





I **always** wake up **before** eight o'clock.
I **never** go to sleep after midnight.



When do you...?

We use **before**, **between**, **during**, and **after** to say when we do things.

Sentence	Order
I eat breakfast before lunch.	breakfast , lunch
I eat lunch between breakfast and dinner.	breakfast, lunch , dinner
I eat dinner after lunch.	lunch, dinner
I work during the week.	Monday, Tuesday, Wednesday, Thursday, Friday



During or between?

1. I eat lunch at my desk _____ work.

a. during

b. between

2. I jog _____ a quarter past six and seven o'clock.

a. during

b. between

3. I work _____ the day.

a. during

b. between

4. I watch TV with Tim _____ half past seven and a quarter to nine.

a. during

b. between



Kim's routine

I wake up at six o'clock every day _____ the week. I arrive at work _____ breakfast. I eat breakfast and lunch at my desk. I come home at half past seven. I jog _____ a quarter past six and seven o'clock. We eat dinner every evening at a quarter to eight. I watch TV with Tim _____ dinner. I go to sleep at eleven o'clock.



before

after

between

during



Your morning

What time do you wake up?
When do you have breakfast?

During the week, I
wake up at 7am. I
eat breakfast **after**
my first meeting.





How often do you...?

We use **always**, **usually**, **sometimes**, and **never** to say **how often** we do things.

How often do you wake up before noon?	Do you do this every day?
I always wake up before noon.	I do this every day.
I never go to sleep after midnight.	I don't do this.
I usually arrive at work at nine o'clock but sometimes I am late.	I do this but not every day.



What is your healthy routine?



When
What

_____ do you eat breakfast?

I _____ eat breakfast before work.

after
always

is
do

When _____ you jog?

I _____ jog after dinner but sometimes I jog before breakfast.

usually
always

How often
Where

_____ do you eat meat?

I _____ eat meat. I always eat lasagne with cheese and no meat.

sometimes
never

always
never

I _____ eat lasagne with meat. It is my favourite!



Speaking practice

Use each of the below in a sentence.

I go to the gym
after dinner.



1 between

2 after

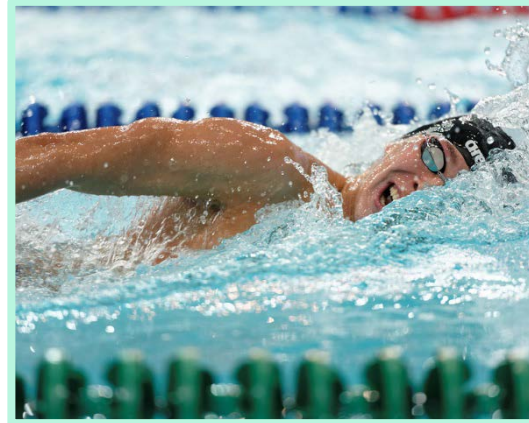
3 before



Make a sentence using each word



always



sometimes



usually

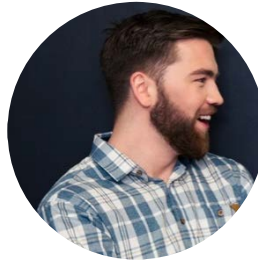


never

I **usually** finish work at 3pm on Fridays.



Answer the questions with your teacher



How often do you eat breakfast?

I _____ eat breakfast.

Do you exercise?

I _____ jog!

Do you eat meat?

I _____ eat meat.



How long do you...?

We use **from** and **until** to say **how long** we do things.

How long do you work?	Do you do this all day?
I work from seven o'clock until six o'clock.	I start at seven o'clock and end at six o'clock.
I work from breakfast until dinner.	I start at breakfast and end at dinner.
I work from Monday until Friday.	I start on Monday and end on Friday.



Between or from until?

1. I jog from a quarter past six _____ seven o'clock.

a. between

b. until

2. I jog _____ a quarter past six until seven o'clock.

a. from

b. between

3. I jog _____ a quarter past six and seven o'clock.

a. from

b. between



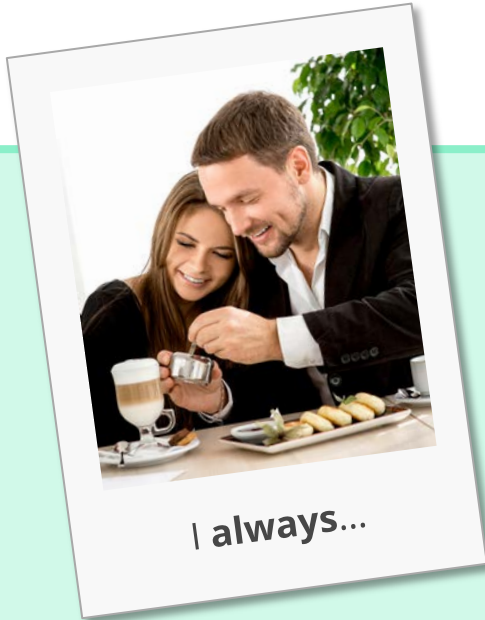
Ask questions and listen to the answers

When do you...?
How often do you...?
How long do you...?





Game



- Your teacher will ask you questions.
- The person who answers the most questions wins!

Do you eat breakfast?

Yes. I eat breakfast **before** I have a shower.

Yes. I **usually** eat breakfast at 7am.

No. I **never** eat breakfast.

I **always** eat breakfast!



Reflect on the goals

Go back to the second slide of the lesson and check if you have achieved all the goals of the lesson.

yes

no



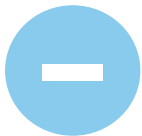


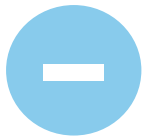
Reflect on this lesson

Think about everything you have seen in this lesson.
What were the most difficult activities or words? The easiest?









If you have time, go over
the most difficult slides again





Answer key

Exercise p. 5

before lunch: wake up, eat breakfast, go to work
after lunch: eat dinner, go to the cinema, go to sleep

Exercise p. 6

1. during 2. between 3. during 4. between

Exercise p. 7

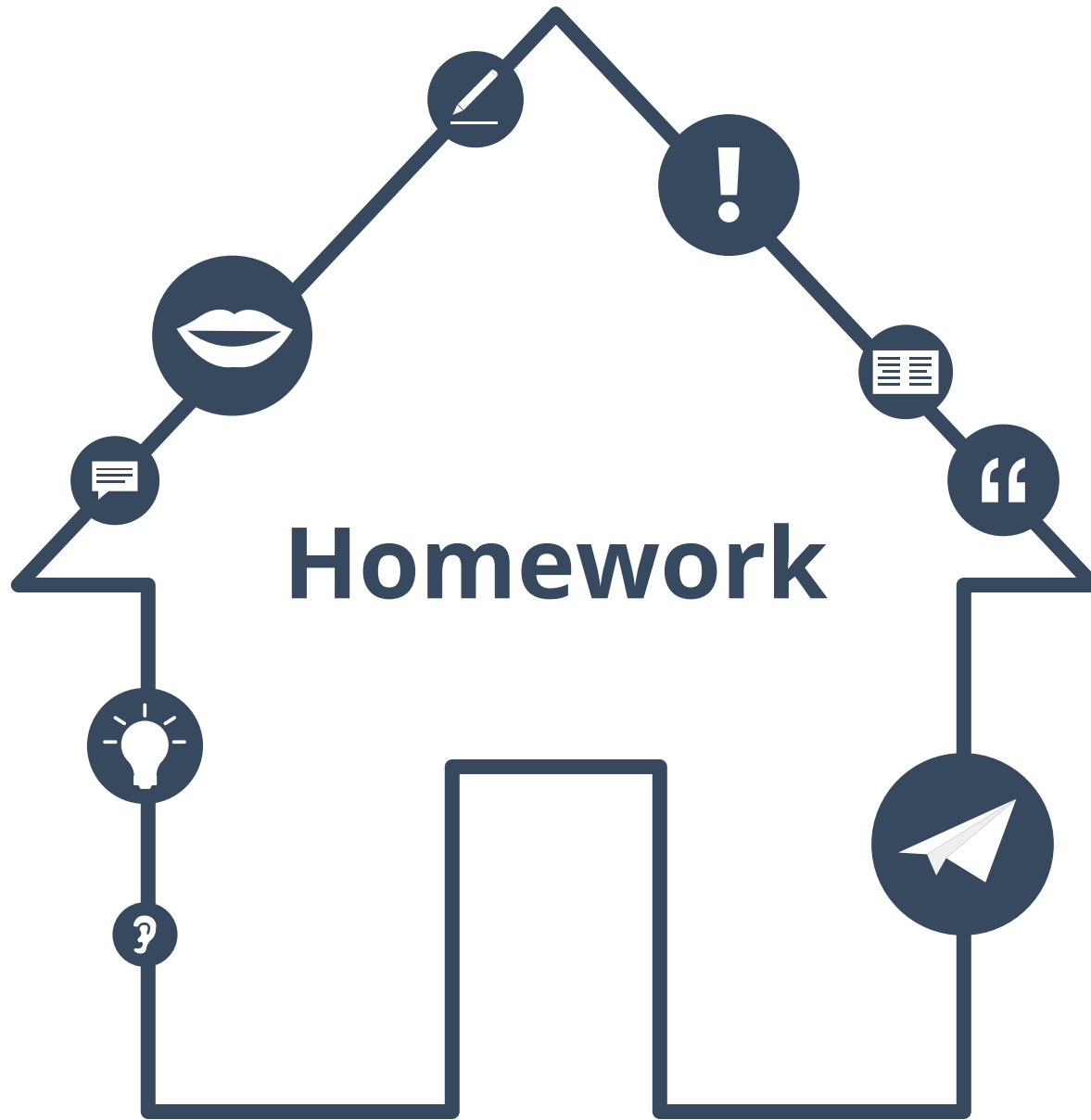
during, before, between, after

Exercise p. 10

When do you eat breakfast? I always eat breakfast before work. When do you jog? I usually jog after dinner but sometimes I jog before breakfast. How often do you eat meat? I never eat meat. I always eat lasagne with cheese and no meat. I always eat lasagne with meat. It is my favourite!

Exercise p. 15

1. until 2. from 3. between





Write your answers on the right list

When do you go to work? When do you jog? When do you watch TV? When do you go to sleep? When do you ride your bike? When do you eat breakfast?

before lunch

between lunch and
dinner

after dinner



Find the words

Find the words!

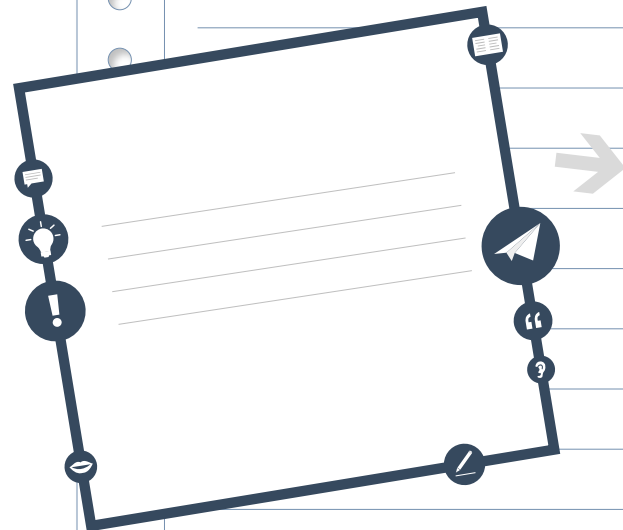
1. before
2. during
3. between
4. after
5. always
6. usually
7. sometimes
8. never

A	T	J	R	W	I	D	V	U
S	X	B	W	H	Q	U	P	U
Y	Y	B	E	F	O	R	E	S
Z	C	E	A	D	B	I	C	U
A	F	T	E	R	D	N	E	A
L	E	W	G	F	F	G	G	L
W	H	E	I	D	J	E		L
A	K	E	L	F	M	G	C	Y
Y	O	N	E	V	E	R	N	H
S	O	M	E	T	I	M	E	S
N	P	I	A	U	R	B	L	Y
X	J	V	Q	K	O	Z	S	M



Text at the beginning

Go back to the text on page 3
and find examples of
the grammar topic of this lesson in it.
Write them down.



I always
wake up
before eight o'clock.



Sentences in the first person plural

**Choose five sentences from this lesson.
Copy them and write them about you and a friend.**





Examples:





I never eat meat.



→ I _____ eat meat.



I always jog.



→ I _____ jog.



...













