

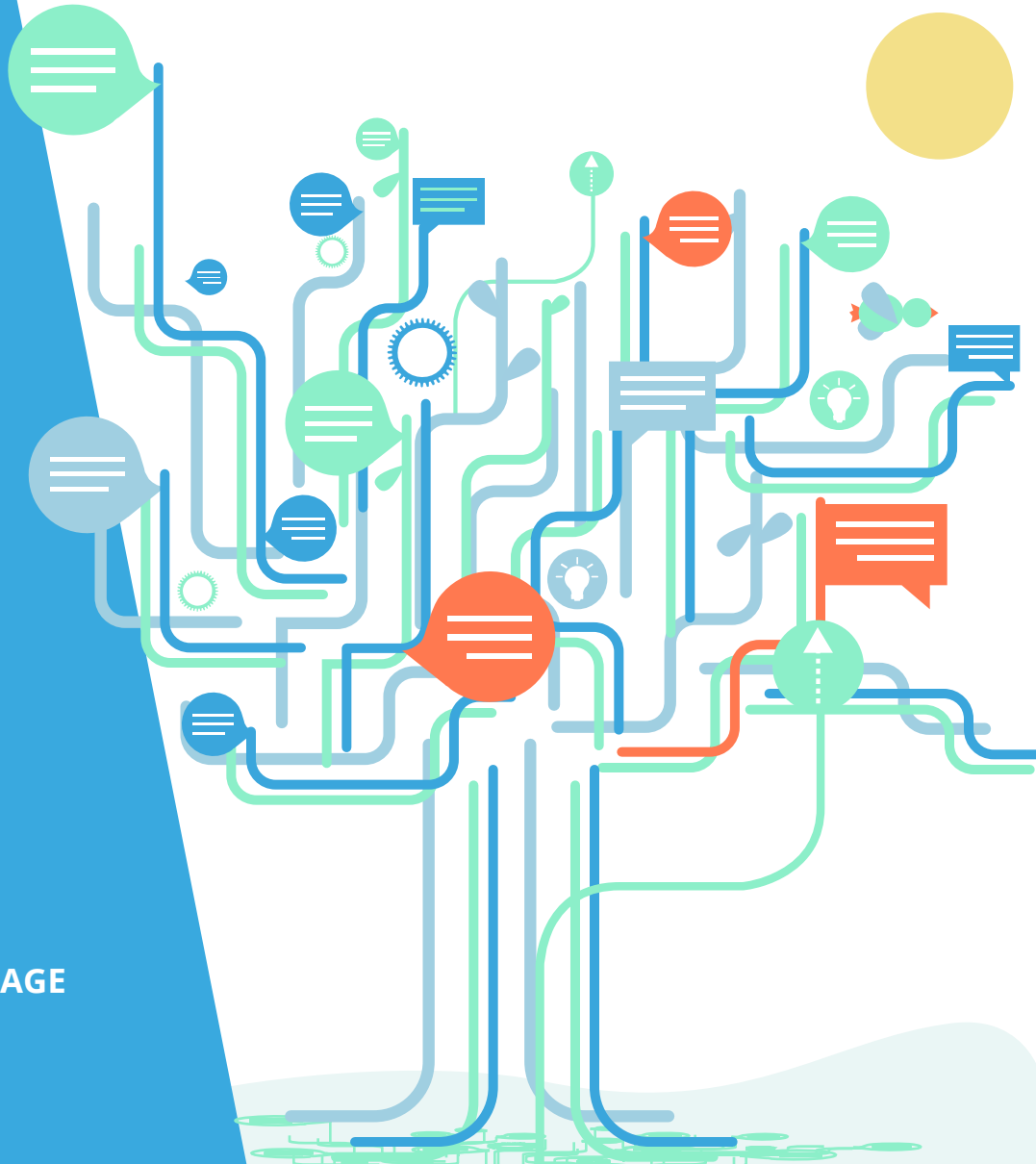
Let's go there!

GRAMMAR

LEVEL
Beginner

NUMBER
A2_1013G_EN

LANGUAGE
English





Goals

- Can distinguish between the use of 'in', 'on' and 'at' for places.
- Can describe location using some simple adverbs and prepositions of place.



I am **at** the train station and I am getting **on** the train. I will meet you **in** the town square, **between** the butcher's and the restaurant.



at



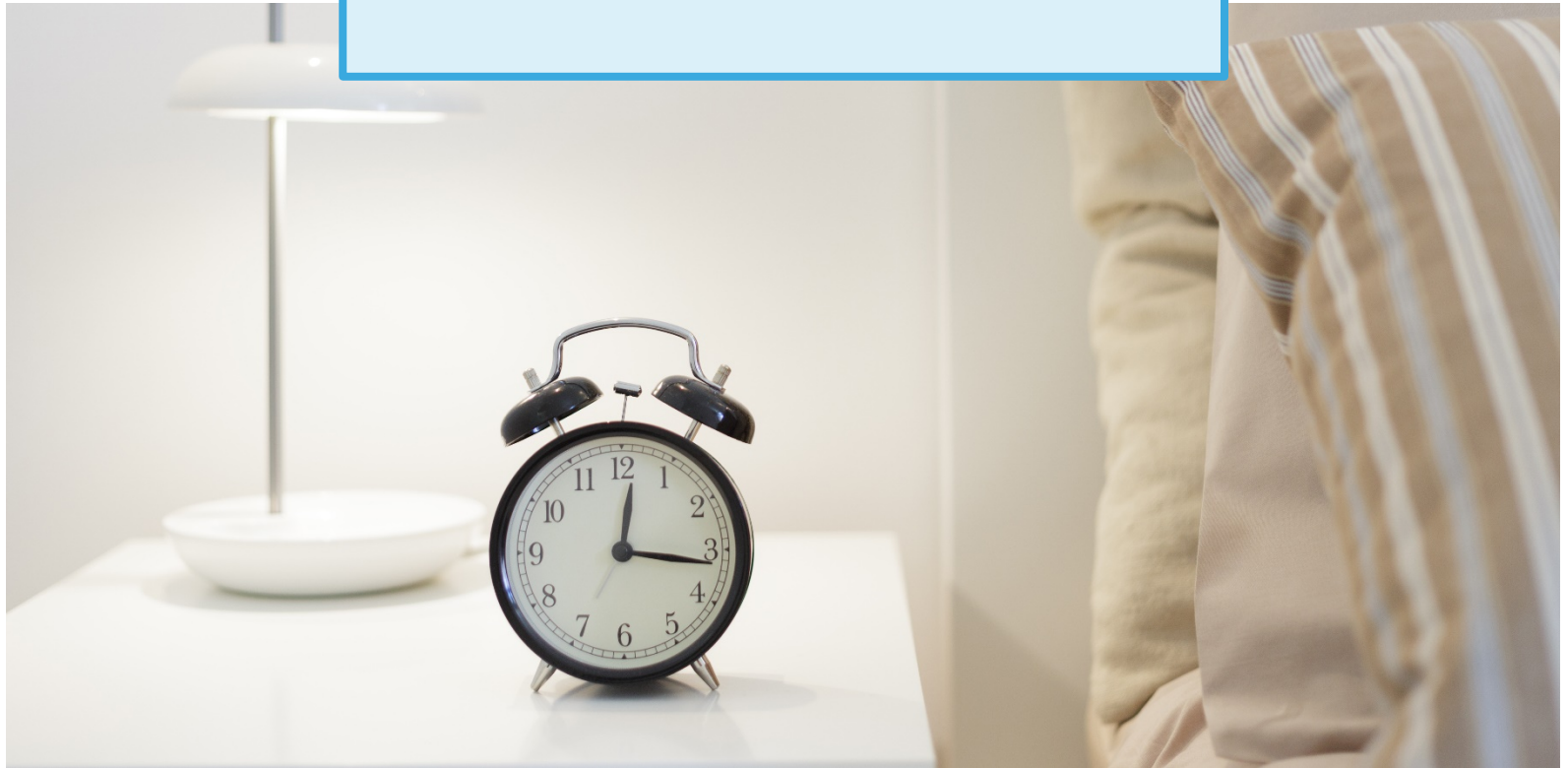
The people are **at** work.

in



The food is **in** the fridge.

on



The clock is **on** the table.



At, on, in: places

We use **at** to talk about **specific points** in space, like an address or a specific location.

at

at home

at work

at the shop

at the end of the street

at the window

at the bus stop

at the reception



At, on, in: places

We use **in** to talk about things that are in an **enclosed space** or which are generally bigger (countries, cities, and neighbourhoods).

in

in the fridge

in my rucksack

in the back garden

in Australia

in Stockholm

in the car

in my pocket



At, on, in: places

We use **on** to talk about things that are on a **surface**.

on

on the floor

on the kitchen table

on the wall

on the grass

on the chair

on the first page

on the beach



At, on, in: places

Here are some examples and commonly-used expressions that use the prepositions **at**, **on** and **in**.

| at | on | in |
|-----------------------------------|------------------------------------|---------------------------------------|
| He works at Google. | I live on the second floor. | I am in the town square. |
| She is at school. | I am on the train. | John is working in the garden. |
| I am at home. | He is on his way. | You arrived just in time. |
| She is at the exit. | I am on my own. | In my opinion... |
| I feel good at the moment. | We are on holiday. | Four days in a row. |



Choose the right option

1. She is waiting _____ the bus station.

a. in

b. at

2. He is going _____ a cruise.

a. on

b. in

3. My new girlfriend comes from a small town _____ Austria.

a. in

b. on



Choose the right option

4. Ben is _____ work.

a. in

b. at

5. I left my phone _____ the table.

a. on

b. in

6. He lives _____ Los Angeles.

a. in

b. on



Choose the right option

7. My favourite beach is _____ the south coast of Spain.

a. in

b. on

8. I waited for nearly an hour _____ the bus stop.

a. at

b. in

9. When I was _____ the train I listened to music.

a. in

b. on



Which doesn't use *at*?

the train

college

the airport

the supermarket



Put the words into the right category

Paris



the bus



the train station



the river Seine



the post office



France



school



university



at

on

in



At, on, in: time

We also use **at**, **on** and **in** when talking about time.

- **At:** used to talk about specific times and holiday periods.
- **On:** days of the week and specific dates.
- **In:** months, years, seasons, durations of time and centuries.

| at | on | in |
|------------------------|---|------------------------|
| At 8 o'clock. | On Thursday. | In August. |
| At 12.30 am. | On the 30 th of June. | In 2010. |
| At the weekend. | On holiday. | In the evening. |
| At night. | On Christmas Day | In winter. |



Choose the correct preposition

I moved to Germany _____ 2010. _____ that time, I couldn't speak much German. When I was _____ the aeroplane I was quite scared. I was scared to live _____ a country where I didn't speak the language.

I learned a lot of German _____ school and I also studied a lot _____ my own. _____ the beginning it was really difficult but after some time it got easier.

I was _____ the library every day; even _____ summer!





Fill in the gaps

Fill in the gaps with *at*, *on* or *in*. Then ask and answer the questions with your teacher.

1. Where did you live _____ 2010?
2. What was your favourite subject _____ school?
3. What things do you like doing _____ your own?
4. What do you normally do _____ Saturdays?
5. What do you usually do _____ 8pm?



in front of



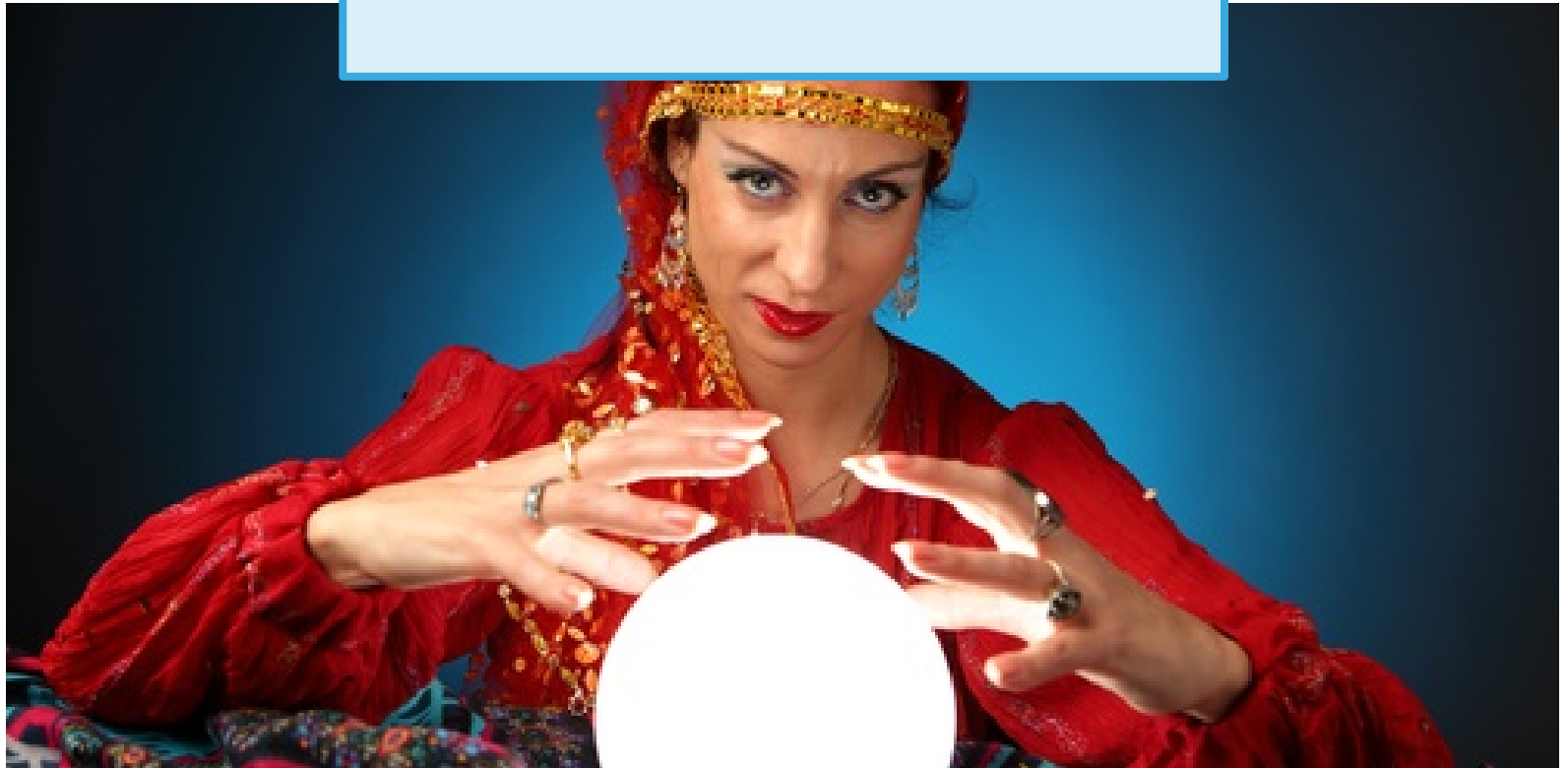
The customer is **in front of** the barber.

behind



The mother is **behind** her daughter.

between



The ball is **between** her hands.



In front of, behind and between

- **In front of** is used for something near the front of something or someone.
- **Behind** is used for something at the back of something or someone. It is the opposite of **in front of**.
- **Between** is used for something in the middle of two things.

| in front of | behind | between |
|--|--|---|
| Look over here! The church is in front of us. | Be careful! A child is standing behind you. | The church is between the butcher's and the baker's. |
| The garden is in front of the house. | The car park is behind the school. | Germany is between France and Poland. |



Here and there

Here is used for something close to us. **There** is used for something away from us.

| here | there |
|-------------------------------------|--|
| Come here and give me a hug. | Go over there and get me a pen. |
| I live here in this house. | The apple is over there on the table. |



Choose the correct option

1. Come _____! I want to give you some chocolate.

a. there

b. here

2. The school is _____ the train station and the supermarket.

a. between

b. here

3. Go over _____ and get me my glasses.

a. there

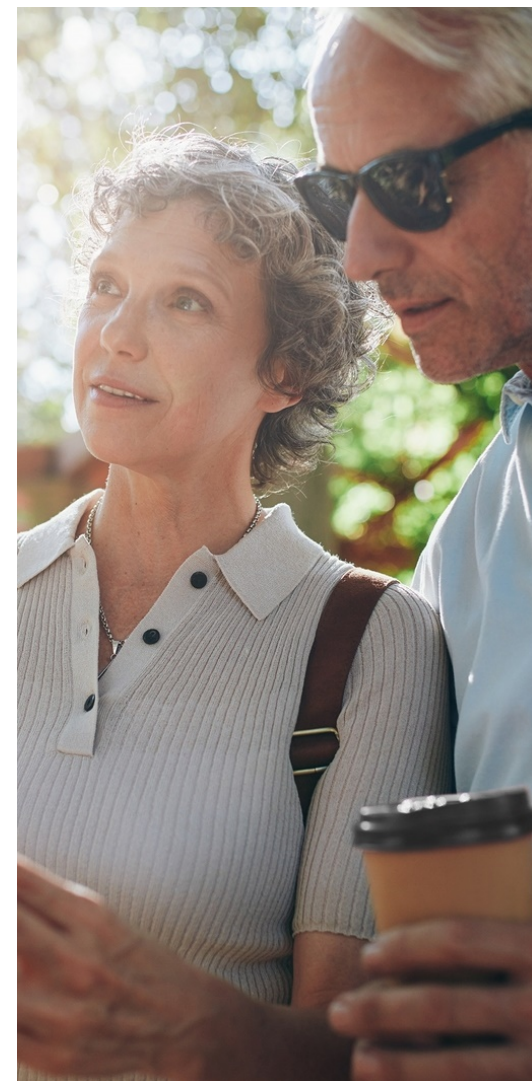
b. behind



Find the mistakes

**There are 5 mistakes with the prepositions.
Can you find them?**

John and Lola are on the train station.
The train station is between of an
Italian restaurant and a hairdresser.
They get in the train and travel two
stops. They get off the train and on
front of them is a big supermarket.
They walk 200 metres and they are on
school.





Make sentences with the following

my son is at

fourth
floor

in the garden
in front of

they are
working

me

we are

train

on the

his dog is

the bus station

we live on the



Fill in the gaps



They are _____ school.

There are not many people _____ the supermarket.



He has flowers _____ his back.

Alice goes to Spain _____ an aeroplane.





Prepositions of place

Describe the positions of the objects in relation to each other.

- The knife is...
- The teaspoon is...





Prepositions of place

Describe the positions of the objects in relation to each other.

- The tray is...
- The coffee is...
- The flower is...





Prepositions of place

Describe the positions of the people in relation to each other.

- The father is...
- The daughter is...





Fill in the gaps

Fill in the gaps with the correct prepositions. You can use each preposition as many times as you want.

I want to tell you about my favourite room in my house: the living room. _____ my living room there is a sofa and two chairs. _____ the sofa I have two cushions and a blanket for when I feel cold. _____ the sofa is a coffee table and _____ the coffee table are some magazines. _____ the sofa _____ the wall are some pictures of me and my family and friends. _____ the two chairs and the sofa there is another small table. There is also a television _____ the wall in front of the sofa so I can sit and watch my favourite shows. When I am _____ home I love spending time in my living room.

in

on

at

in front of

behind

between



Your favourite room

Using the text on the previous page to help you, tell your teacher about your favourite room in your house.



In my bedroom...

in

on

at

behind

between

in front of



Talk about your town

Talk about places in your town. Use the correct prepositions!





Reflect on the goals

Go back to the second slide of the lesson and check if you have achieved all the goals of the lesson.

yes

no

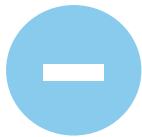




Reflect on this lesson

Think about everything you have seen in this lesson.
What were the most difficult activities or words? The easiest?



If you have time, go over
the most difficult slides again





Answer key

Exercises p. 11 - 13

1. B - 2. A - 3. A - 4. B - 5. A - 6. A - 7. B - 8. A - 9. B

Exercise p. 14

the train

Exercise p. 15

At: the train station, the post office, university, school. **On:** the bus, the River Seine. **In:**

Exercise p. 17

in, At, on, in, at, on, At, at/in, in

Exercise p. 18

1. In - 2. at - 3. on - 4. on - 5. at

Exercise p. 24

1. B - 2. A - 3. A

Exercise p. 25

on the train station = **at** the train station - between of an = **between an** - in the train = **on**
the train - on front = **in** front - on school = **at** school

Exercise p. 26

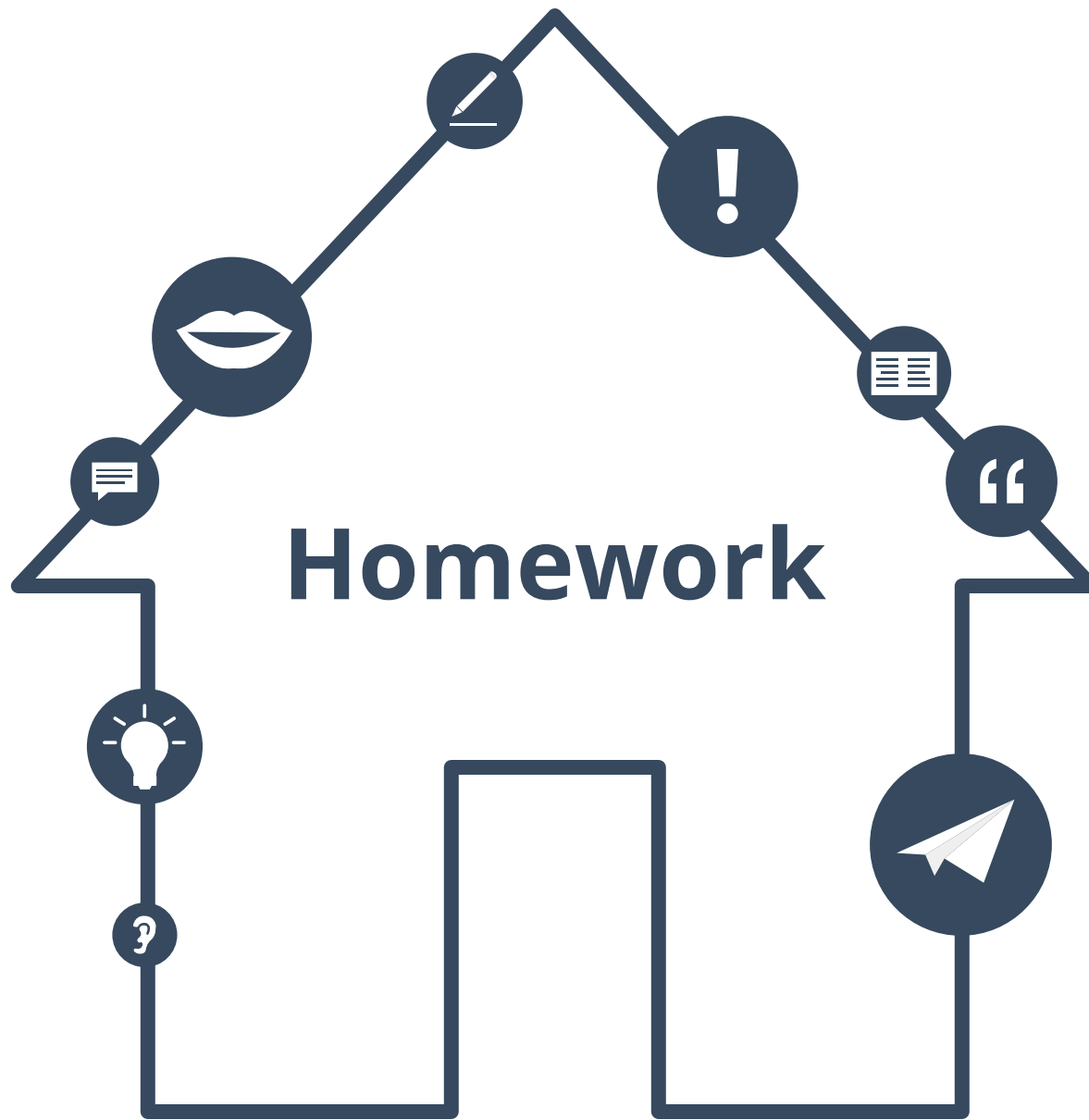
James is at the bus station. I am working in the garden. Harry is in front of me. We live on the fourth floor.

Exercise p. 27

1. At - 2. in - 3. behind - 4. on

Exercise p. 31

Accept any answer that fits the gap.





Match the beginnings and ends of the sentences

1. I am standing in front...

2. The car park is behind...

3. The flower shop is...

4. I am getting

a. of the train station.

b. on the train

c. the school.

d. between the bakery and the butcher's.



Write about your town

Write about a day in your town. Use the words below to help you.

between

on

in front of

behind

at

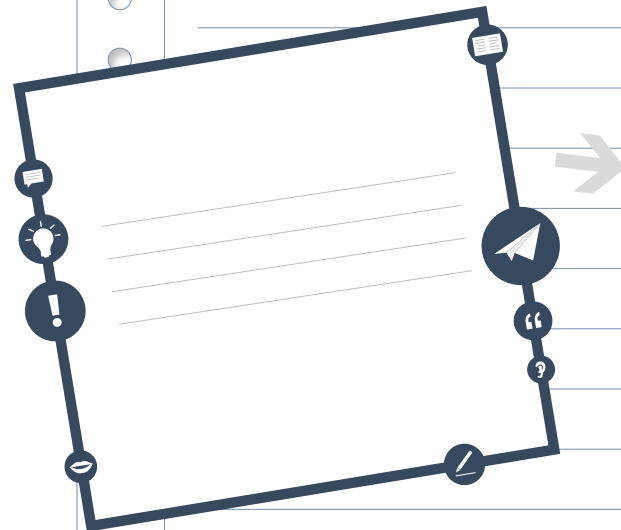
in

A vertical sheet of white paper with a spiral binding on the left side and ten horizontal lines for writing.



Text at the beginning

**Go back to the text on page 3
and find examples of
the grammar topic of this lesson in it.
Write them down.**



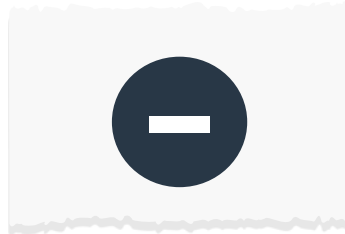
Copy parts of the text
that are examples of
topic of the lesson.



Easy or difficult?

Is the grammar topic of this lesson...
easy or difficult?

Write down what is difficult for you and what is easy.

A vertical rectangular area with a light gray background, a vertical line on the left side, and a series of horizontal lines for writing, resembling a page from a spiral notebook.



Homework answer key

1. A, 2. C, 3. D, 4. B



About this material



Find out more at
www.lingoda.com

This material is provided by
lingoda

lingoda Who are we?



Why learn English online?



What kinds of English classes do we offer?



Who are our English teachers?



How do our English certificates work?



We also have a language blog!